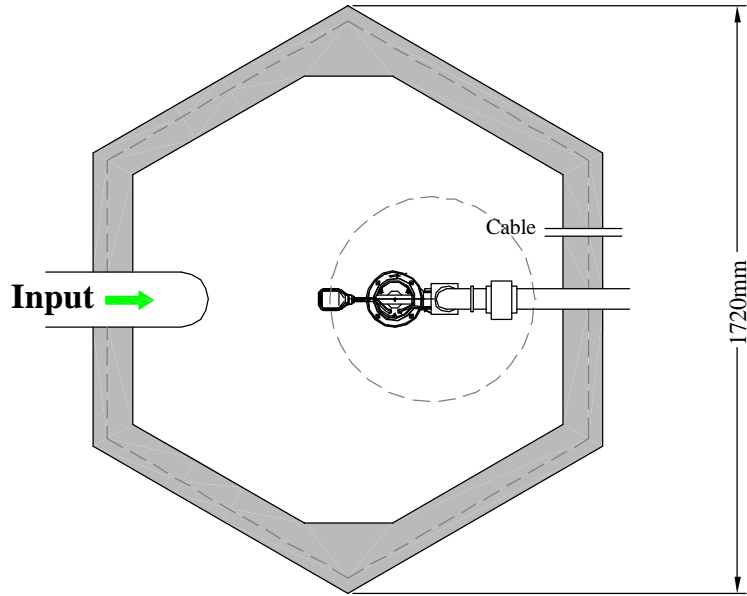
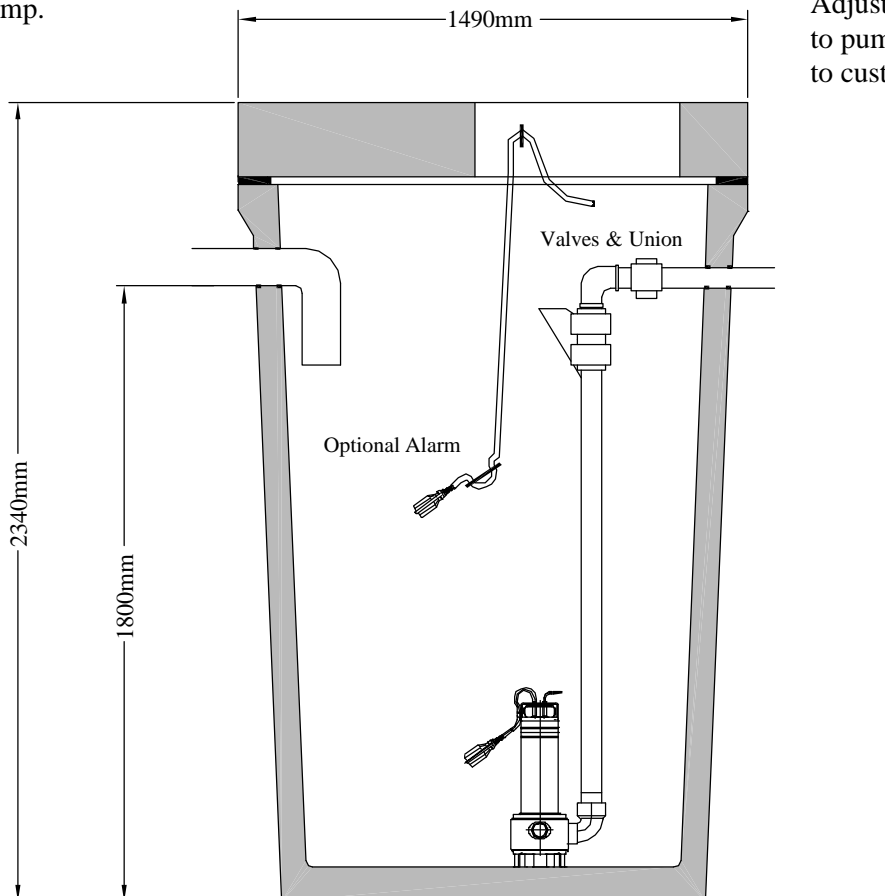


Pumping Station H-Tank Volume (2,500 litres) .



Variety of pumps available.
Contact Molloy Precast
for suitable pump.



Adjustments can be made
to pumping station according to
customer requirements.

All tanks must be placed on a perfectly
level and firm suitable base.

This drawing is ©. All rights reserved.

<p>E-mail: info@molloyprecast.com Web: www.molloyprecast.com</p>	<p>Molloy Precast Products Ltd. Coleraine, Clara Road, Tullamore, Co.Offaly. Tel: 05793 26000 Fax: 05793 26060</p>	<p>Pumping Station: H-Tank Volume (2,500 lit) Tank Size: 1720mm x 1490mm Height: 2340mm Volume: 2,500 liters Weight: 1500 Kg. (Tank Dim: ± 20mm. Weight: ± 30Kg.)</p>	<p>Note: See PDF for excavation details & safety regulations. Note: Specify hole drilling requirements. All civil works by customer. Note: Do NOT scale from drawings. Drawings for illustration purposes only.</p>
---	--	---	--

