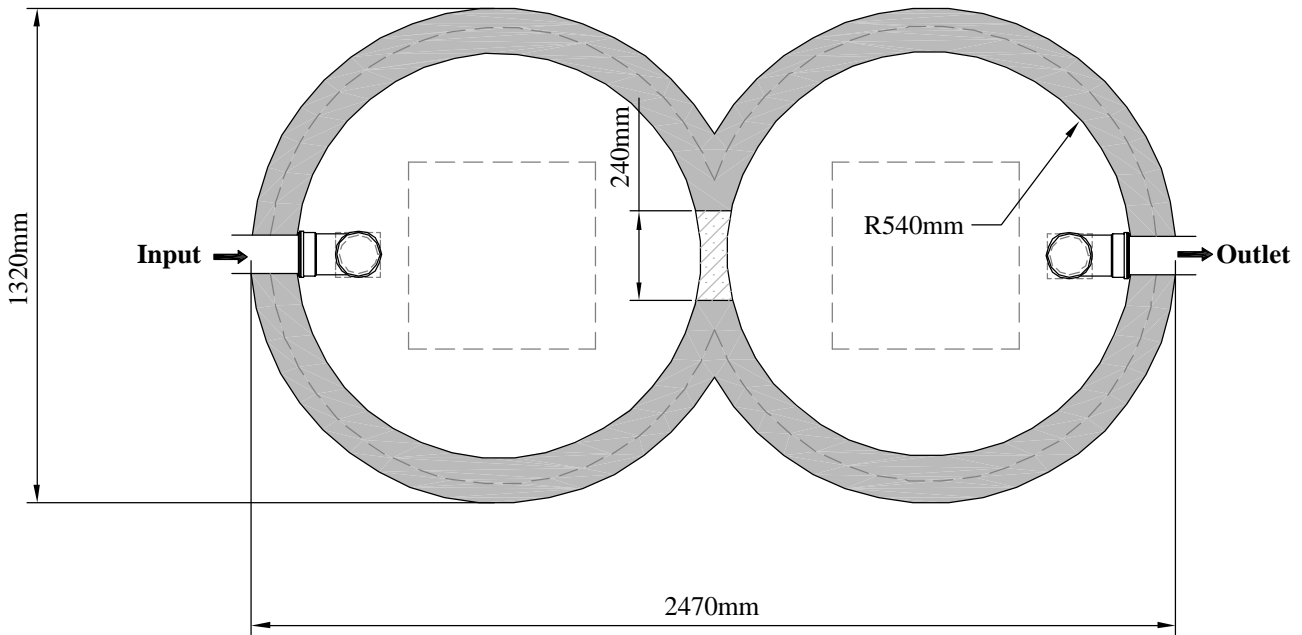
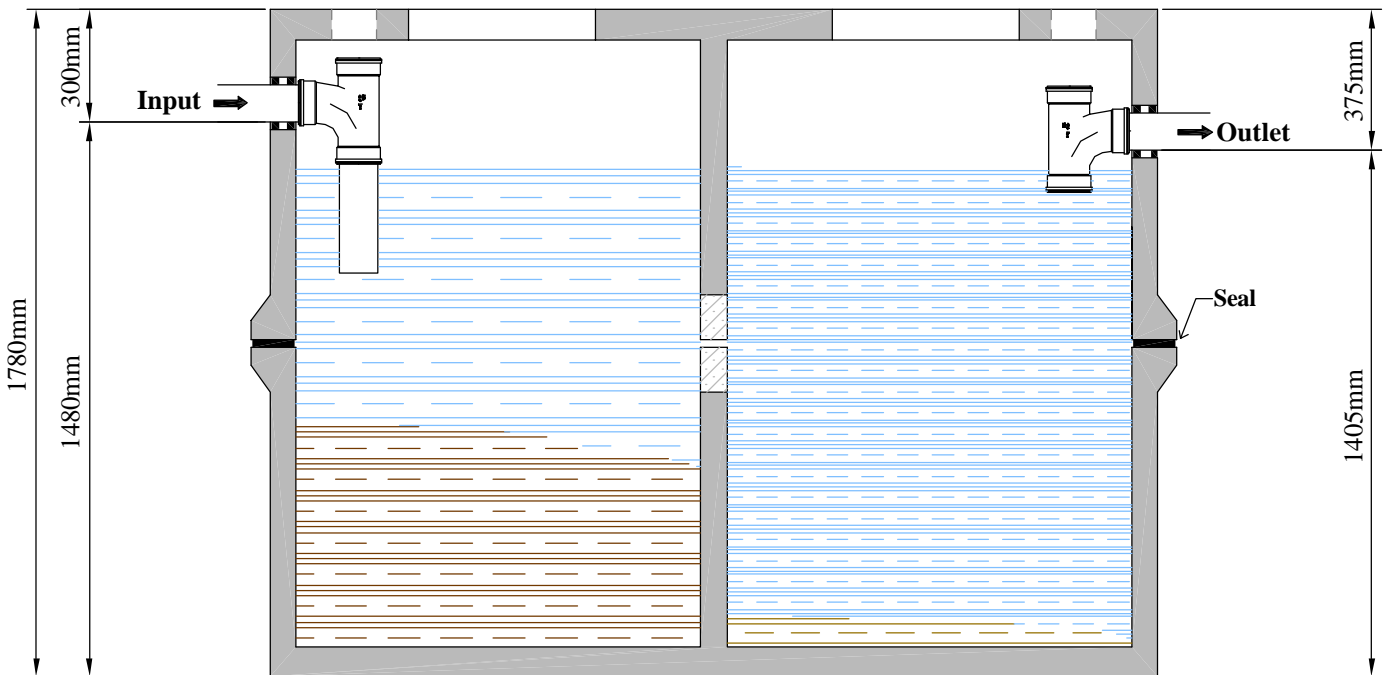
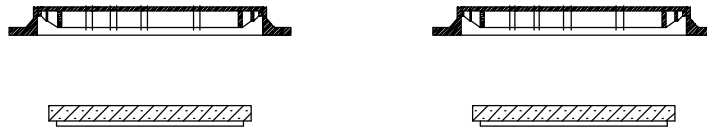


**Fig. 8 Septic Tank**




Optional locking steel manhole covers



Connection to percolation area must insure that no runback is possible.

A good firm, rock free, level base is required.

This drawing is ©. All rights reserved.

 <b>Aswasep</b> from <b>MOLLOY PRECAST</b>	E-mail: info@molloyprecast.com Web: www.molloyprecast.com	Molloy Precast Products Ltd. Coleraine, Clara Road, Tullamore, Co.Offaly. Tel: 05793 26000 Fax: 05793 26060	<b>Tank Type</b> Fig.8 Tank <b>Tank Size:</b> 2470mm x 1320mm (Overall) <b>Height:</b> 1780mm <b>Volume:</b> 2800 liters <b>Weight:</b> 3000 Kg. ex.lid (Tank Dim: ± 20mm. Weight: ± 30Kg.)	<b>Note:</b> See pdf for excavation details & safety regulations.  <b>Note:</b> Specify hole drilling requirements. All civil works by customer.  <b>Note:</b> Do NOT scale from drawings. Drawings for illustration purposes only.
	This drawing is ©. All rights reserved.			