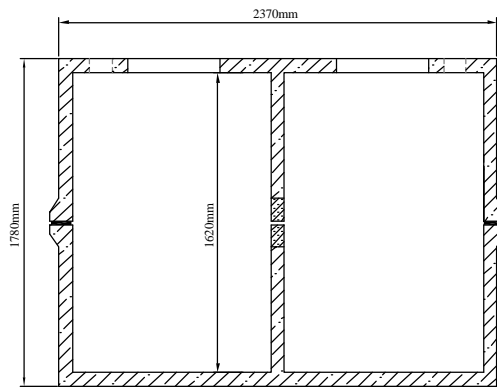
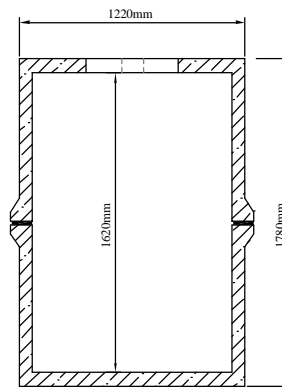


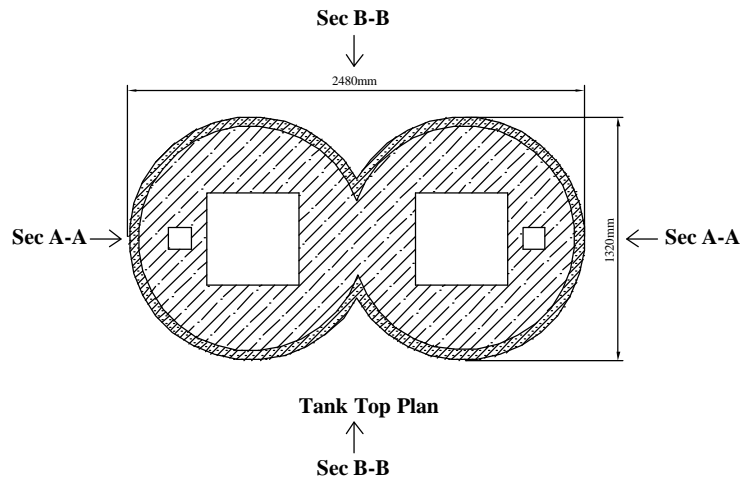
Tank Type: Fig.8 Tank



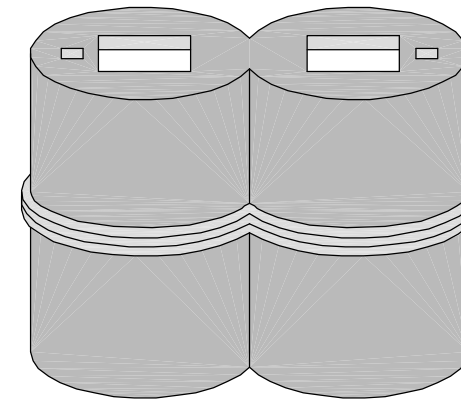
**Tank Vertical Section
(Through Section A-A)**



**Tank Vertical Section
(Through Section B-B)**



Tank Top Plan




E-mail: info@molloyprecast.com
 Web: www.molloyprecast.com
Aswa[®] from MOLLOY PRECAST

Molloy Precast Products Ltd.
 Coleraine, Clara Road,
 Tullamore, Co.Offaly.
Tel: 05793 26000
Fax: 05793 26060

Tank Type	Fig.8 Tank
Tank Size:	2470mm x 1320mm (Overall)
Height:	1780mm
Volume:	2800 liters
Weight:	3000 Kg. ex.lid
(Tank Dim: ± 20mm. Weight: ± 30Kg.)	

Note: See reverse for excavation details & safety regulations.

Note: Specify hole drilling requirements. All civil works by customer.

Note: Do NOT scale from drawings. Drawings for illustration purposes only.

This drawing is ©. All rights reserved.